

FCCLA Update

2024 GATFACS Breakfast

Caitlin Roberson, Executive Director
Georgia FCCLA



Jhiriss Smith

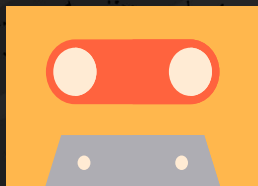
24-25 Georgia FCCLA State President

Region 3 - Apalachee High School

president@gafccla.com

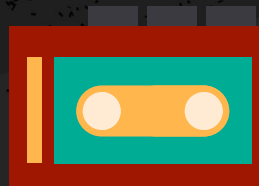


2024-2025 **CONFERENCE THEMES**



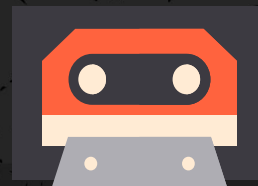
**FALL
RALLY**

**Rockin'
Leadership**



FLC

**Tuning In
To Success**



SLC

**Topping the
Charts**

1

STATE STAFF & LEADERSHIP



OUR TEAM



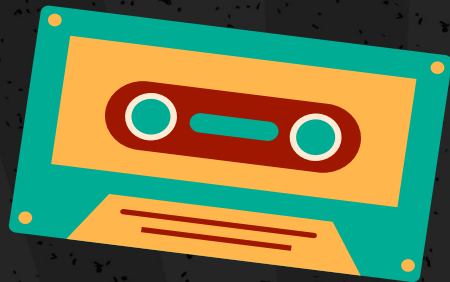
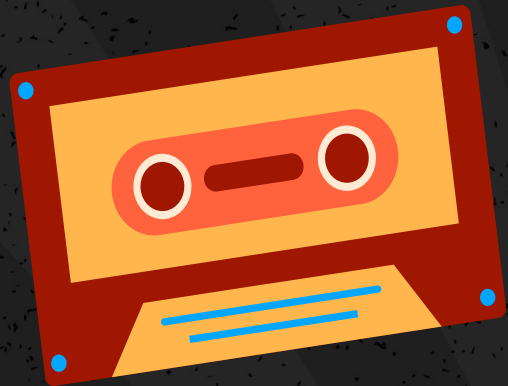
Caitlin Roberson



Mellony Adkins



Vickie Rundbaken



AMANDA HAYES

**NEW GEORGIA FCCLA
STAR EVENTS COORDINATOR**



REGION 7 ADVISER POSITION OPEN

We are accepting applications for the Region 7 Adviser.

If interested, please send your resume to board@gafccla.com

Need more information, check out the roles and responsibilities of a Region Adviser on a previous Memo Monday Special Edition or contact the Board Chair, Dr. Carmen Pedersen.

bit.ly/gafcclaadultleadership



REGION ADVISERS	REGION ADVISER NAME	REGION ADVISER SCHOOL
REGION 1	BETH PILKINGTON	RIDGELAND HIGH SCHOOL
REGION 2	JENNIFER LOPEZ	BUFORD HIGH SCHOOL
REGION 3	LYNN BOOTH	COMMERCE HIGH SCHOOL
REGION 4	MARGARET JUNE	CHARLES DREW HIGH SCHOOL
REGION 5	APRIL LANGER	ARABIA MOUNTAIN HIGH SCHOOL
REGION 6	MARSHA GIBSON	WESTSIDE HIGH SCHOOL
REGION 7	VACANT	VACANT
REGION 8	HANNAH RIDGEWAY	TIFT COUNTY HIGH SCHOOL
REGION 9	MAEGAN FRANCO	LONG COUNTY SCHOOLS

2

MEMBERSHIP & AFFILIATION





24,389

2nd Largest State Association in the Nation
277 chapters with 411 Chapter Advisers

As of 05/29/2024

2023-2024 Annual Membership Report

bit.ly/gafcclamemreport24



AFFILIATION **PACKAGES**

\$6,000

URBAN

Must be within the
corporate limits of
a city with a
population of
100,000+

\$400

MIDDLE LEVEL

9th Grade and
below
If you will have
over 30+ members,
this is a great deal

\$1115

UNLIMITED

Good deal, if 85+
members in the
chapter.
Additional benefits
are included.
Flat Rate.

AFFILIATION **PACKAGES**

\$495

UP TO 25

Flat rate for up to 25 members. Then, \$13 for each member over 25.

\$13/member

REGULAR

**Most Popular option for chapters.
Must have 12 members for chapter status
\$156 minimum invoice**

AFFILIATION PORTAL REMINDERS

National FCCLA will reset their affiliation late July. They usually reopen the affiliation portal for the 2024-2025 school year on August 1st, 2024.

You cannot affiliate for the upcoming year until all outstanding invoices have been paid in full. This includes National Leadership Conference and Fall Leadership Institute.



3

**NLC
REMINDERS**



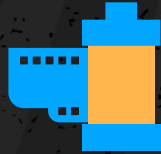
REMINDERS FOR **NLC**

OPENING SESSION

June 29th, 2024

Starts at 6:00 PM

Doors Open at 5:15 PM



ADVISER CONFIRMATION

June 17th, 2024

Complete in Portal

STATE MEETING

June 29th, 2024

Starts at 8:30 PM

Follows the Opening



STUDENT ORIENTATION

June 17th, 2024

Complete in Student Portal

State Recognition Event Survey

Option #1 – In-Person Event at
Sheraton Grand Seattle
(5 blocks from the Convention Center)

Option #2 – Exit Packet Pick-Up with
Medals at the Summit Convention
Center

bit.ly/24nlcrecsurv



NLC LAPEL PINS



- You can pick-up your lapel pins in the Lobby of the Hyatt Regency Seattle on **Friday, June 28th from 3:00-5:00 PM**
- You can pick-up your lapel pins in the Lobby of the Hyatt Regency Seattle on **Saturday, June 29th from 9:00 AM-noon**
- You can pick-up your lapel pins in the Lobby of the Hyatt Regency Seattle on **Saturday, June 29th from 3:00-5:00 PM**
- You can pick-up your lapel pins at the **State Meeting** at National Leadership Conference.

FOUNDATION VOUCHERS REQUIREMENTS

If your student competitor receives a Georgia FCCLA Foundation NLC Voucher, they must attend the **Opening Session and the Georgia Delegation State Meeting** in their entirety while in Seattle, Washington for NLC.

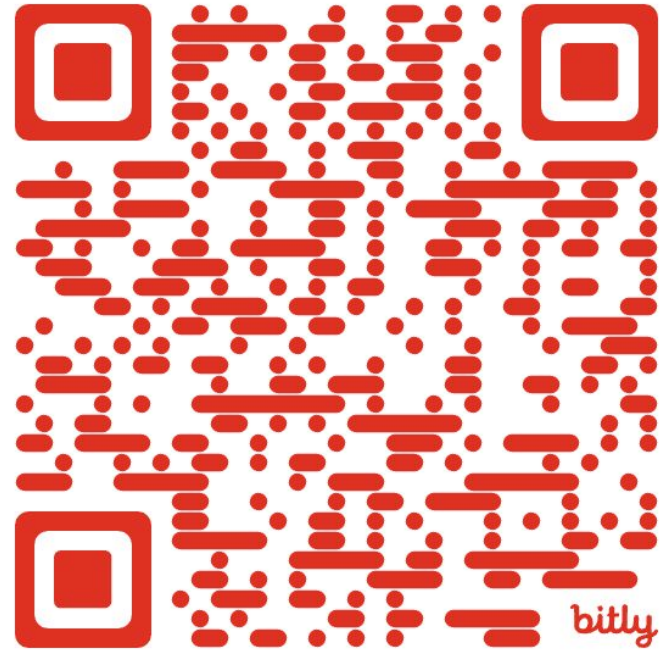
- Attendance will be taken at both events.
- If your student receives a Foundation voucher and does not attend both sessions, the chapter will be invoiced for \$55 post-NLC and must be paid by August 31st, 2024.
- The Opening Session will be held on Saturday June 29th, 2024, from 6:00 PM to 8:00 PM. Attendance will be taken by sign-in sheet.
- The Georgia Delegation State Meeting will be on Saturday, June 29th, 2024 after the Opening Session at 8:30 PM. Attendance will be taken by roll call.

NATIONAL FCCLA PROPOSED BYLAWS

National FCCLA will be proposing bylaw amendments and new purposes at the Business Session at NLC.

If you have any recommendations for our voting delegates, please email Caitlin with your recommendations.

fcclainc.org/about/governance



4

CALENDAR OF EVENTS



DISCOVER **TRAINING**

COVINGTON

**THURSDAY,
AUGUST 22ND**

CAMP JOHN HOPE

**THURSDAY
SEPTEMBER 12TH**



RATES

**EARLY - \$25
REGULAR - \$35**

DEADLINE

**EARLY - 8/9 & 8/23
REGULAR - 8/15 & 8/29**

FALL RALLY @ THE FAIR

DATE

**WEDNESDAY
OCTOBER 9TH**

WRISTBANDS

**PREORDER - \$25
ON-SITE - \$30**

**PICK UP FOR PREORDERS
WILL BE AFTER THE SESSION**



RATES

**EARLY - \$20
REGULAR - \$30
LATE - \$50**

DEADLINE

**EARLY - 9/6
REGULAR - 9/13**

Georgia CTI, a Georgia CTSO, supports students with disabilities enrolled in Career, Technical, and Agricultural Education courses.

Georgia CTI collaborates with the **Georgia Vocational Rehabilitation Agency (GVRA)** to provide financial support for students attending conferences and events, as well as post-high school services. GVRA has recently added the Fall Leadership Rally to the list of events they are willing to **financially support for students with disabilities**. Since Georgia CTI and Georgia FCCLA share the Fall Leadership Rally at the Georgia National Fair, the Executive Director of Georgia CTI has extended this opportunity to Georgia FCCLA. The Georgia FCCLA Board of Directors approved this opportunity at their June Board Meeting.



WE ARE...



GOING TO...



SIX FLAGS!

ADDITIONAL OPTION FOR CHAPTERS TO ATTEND
FALL RALLY 2024
[WORKING WITH GEORGIA HOSA]

FALL RALLY @ SIX FLAGS

DATE

WEDNESDAY
OCTOBER 16TH

INCLUDES

INCLUDES LUNCH
& RIDES. T-SHIRT
IS A \$10 ADD-ON



RATES

EARLY - \$75
REGULAR - \$90
LATE - \$130

DEADLINE

EARLY - 9/6
REGULAR - 9/13

FALL LEADERSHIP CONFERENCE

DATE

TWO-DAY OPTION
11/12-13TH

ONE DAY OPTION
11/13 & 11/14



RATES

EARLY - \$85 / \$50
REGULAR - \$95 / \$60
LATE - \$80
(1 DAY ONLY)

DEADLINE

EARLY - 10/10
REGULAR - 10/17

REGION STAR EVENTS

DATE

MAJORITY WILL BE ON
FEBRUARY 7TH OR 8TH
FINAL DATES BY AUG. 1

NOTE

STUDENTS MUST
COMPETE AT REGION
& ADVANCE TO
STATE



RATES

EARLY - \$20
REGULAR - \$30
LATE - \$50

DEADLINE

EARLY - 12/18
REGULAR - 1/15

FCCLA DAY AT THE CAPITOL

DATE

FEBRUARY
10TH-13TH

OPTIONAL

GEORGIA CTSO
LEGISLATIVE EXPO
FEBRUARY 5TH



RATES

NO COST

DEADLINE

2/5
"Registration"

STATE LEADERSHIP CONFERENCE

DATE

MON - WED
MARCH 24-26TH

ADD-ONS

MEALS FOR BASIC
POLOS



RATES

EARLY - \$100 / \$75
REGULAR - \$115 / \$90
LATE - \$140 / \$140

DEADLINE

EARLY - 2/13
REGULAR - 2/20

NATIONAL LEADERSHIP CONFERENCE

DATE

JULY 5TH - 9TH

LOCATION

ORLANDO, FL



5

UPDATES & ODDS AND ENDS





SCAN ME

GEORGIA

ORGANICS



GEORGIA
ORGANICS

OCTOBER FARM TO SCHOOL MONTH

PARSLAY

the Day

OCTOBER FARM TO SCHOOL MONTH
bit.ly/parslaythedaysignup

SLC **RECOGNITION**

Starting at the 2025 SLC, we will recognize the **Top 5 individuals/teams for each STAR Event per level who have achieved a Gold or Silver medal placement.**

Benefits

- Shortens session duration
- Emphasizes excellence
- Aligns closer to National FCCLA
- Simplifies Logistics



WHAT WE WOULD **CHANGE**

Since the Awards Sessions will be shorter in length, we would have an Exit Packet Pick-Up for our advisers at the completion of the Awards Session.

Their Exit Packets would include:

- All medals for students not recognized on stage
 - (Currently, we don't hand out medals for non-Top 10)
- Printed Medal Count Report with their competitors rankings and medal designations
- Rubrics for their State and STAR Events
- STAR Events and State Events Certificates
- National Leadership Conference Informational Packet

FCCLA®

FCCLA is pleased to announce a new exclusive partnership with Uniforms Today, the official supplier of the next generation of FCCLA blazers. These updated blazers will boast a modern design, including the FCCLA logo on the upper left chest so that the logo appears better in photos and in public gatherings.

The current blazers featuring the patch on the pocket remain approved for official FCCLA events; although replacing current blazers is not a requirement, those looking to purchase new ones or preferring the updated style will find the new blazers available for order from Uniforms Today starting this summer.

For your convenience, a QR code is provided so you can easily place your orders for the new blazers and all your uniform needs. Please stay tuned for their availability and welcome the opportunity to showcase your FCCLA spirit in style.

*Exciting Update for FCCLA Members:
Introducing Our New Blazer Supplier!*



UNIFORMS
TODAY



FCCLA® GEORGIA

DRESS CODE

This dress code applies to all members attending competing in **Region STAR Events and/or attending State Leadership Conference.**

FCCLA BLAZERS ENCOURAGED. PROFESSIONAL WHITE OR BLACK SHIRT (LONG OR SHORT SLEEVES) ACCEPTED

Neck wear options can include the neck wear from the official emblematic supplier, black or red tie, black or red bow tie, single strand of pearls, red black, and/or white scarf, or no neck wear.



JEANS, T-SHIRTS, ATHLETIC WEAR ARE **NOT** ACCEPTABLE

GEORGIA FCCLA DOCUMENTS SUMMER RELEASE



- June 14th - GATCE Pre-Conference Workshop & FCCLA Update
- June 14th - 2023-2024 Georgia FCCLA Membership Report
- June 21st - Calendars with Registration Deadlines and Costs
- June 21st - 2023-2024 Georgia FCCLA Annual Report
- July 12th - 2024-2025 Georgia FCCLA Chapter Manual
- July 12th - Updated (24-25) History of Georgia FCCLA PowerPoint
- July 19th - 2024-2025 Georgia FCCLA Competitive Events Guide

THANK YOU!

REACH OUT TO CAITLIN !!

CROBERSON@GAFCCLA.COM

770-530-1874

GAFCCLA.COM

@GEORGIAFCCLA



CREDITS: This presentation template was created by **Slidesgo**, including icons by **Flaticon**, infographics & images by **Freepik**

Please keep this slide for attribution

